

PT SERIES

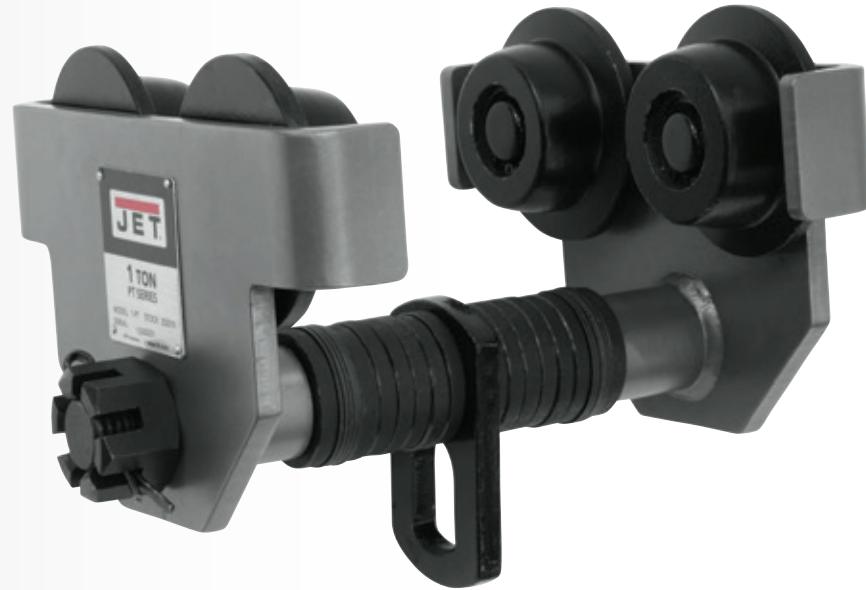
Our heavy-duty, long-lasting manual trolleys provide smooth movement across a variety of beams in any environment. The added bulk and durability also provide our widest offering of capacities, up to 10 tons.

DURABILITY

- Easily adjustable to wide-flange H-beams, standard I-beams or curved track with the included spacer washers
- Hardened steel wheels and double sealed lubricated ball bearings provide smooth movement
- Welded all-steel frame and powder coat finish provide maximum durability and protection
- Built-in bumper guards increase user safety and extend the life of the trolley

STANDARDS

- This product complies with ANSI / ASME B30.11 and B30.17 Standards
- Load tested to 125% of capacity with certificate



HDT SERIES

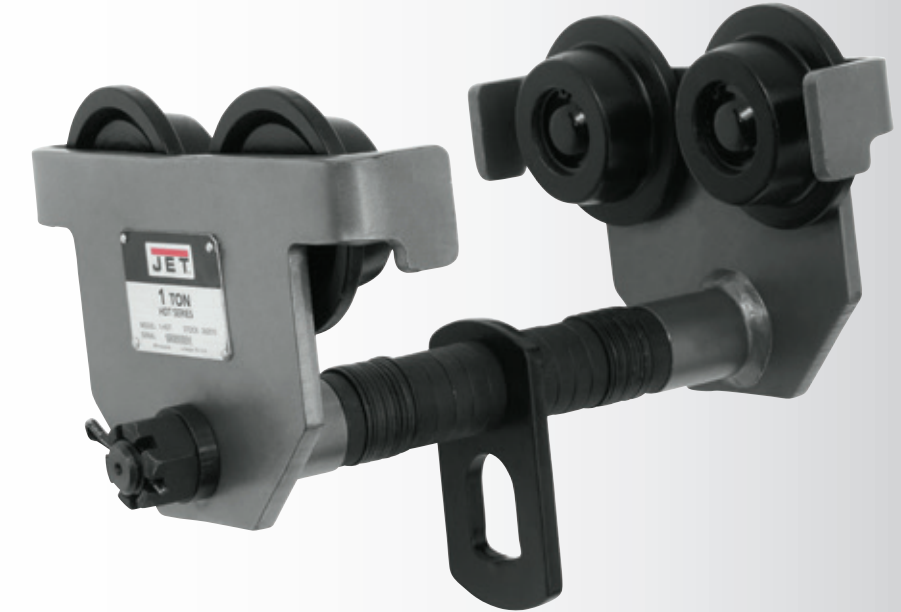
This compact line of manual trolleys feature smaller wheels perfect for application with limited head room.

DURABILITY

- Built-in bumper guards on the side plates increase safety and extend trolley life
- Designed for low-maintenance, trouble-free use on wide flange H-beams, standard I-beams, or curved track
- Hardened steel wheels and double-sealed lubricated ball bearings provide smooth movement
- Light weight for maximum versatility

STANDARDS

- This product complies with ANSI / ASME B30.11 and B30.17 Standards
- Load tested to 125% of capacity with certificate



STOCK NUMBER	252005	252010	252015	252020	252030	252050	252060
Model Number	1/2-PT	1-PT	1-1/2-PT	2-PT	3-PT	5-PT	10-PT
Capacity (T)	1/2	1	1-1/2	2	3	5	10
Capacity (lbs.)	1100	2200	3300	4400	6600	11000	22000
Beam Flange Capacity (min. / max / in.)	2-1/2 - 8	3 - 8	3-1/4 - 8	3-1/4 - 8	4 - 8	4-5/8 - 8	4-3/4 - 8
Min. Curve Radius (in.)	39	39	43	43	51	55	67
Beam Height (min. / max / in.)	4 - 19	4 - 19	4 - 19	4 - 19	5 - 19	5 - 19	6 - 19
Wheel Diameter (in.)	2-2/7	3	3-1/3	3-1/2	4-1/3	4-4/5	6
Wheel to Hook Mount (in.)	4-4/9	5	5-5/7	6	7-1/3	8-5/8	10-5/6
Max. Hook Size (W / in.)	15/16	1-1/5	1-1/3	1-3/7	1-7/9	2-1/3	3-2/9
Overall Dimensions (L x W x H / in.)	8-1/3 x 12-2/7 x 5-1/8	10 x 13 x 6	11 x 13-2/9 x 6-3/8	11-8/9 x 13-7/9 x 6-2/3	13-5/8 x 14-4/7 x 8-1/2	15 x 15-3/4 x 10	18 x 17 x 11-3/5
Weight (lbs.)	19	33	41	51	83	120	202

STOCK NUMBER	262005	262010	262020	262030	262050
Model Number	1/2-HDT	1-HDT	2-HDT	3-HDT	5-HDT
Capacity (T)	1/2	1	2	3	5
Capacity (lbs.)	1100	2200	4400	6600	11000
Beam Flange Capacity (min. / max / in.)	2-1/2 - 8	3 - 8	3-1/4 - 8	4 - 8	4-5/8 - 8
Min. Curve Radius (in.)	35	39	43	51	55
Beam Height (min. / max / in.)	3 - 24-1/2	5 - 24-1/2	6 - 24-1/2	8 - 24-1/2	10 - 24-1/2
Wheel Diameter (in.)	2-13/16	2-1/2	3	3-15/16	4-3/4
Wheel to Hook Mount (in.)	4	4-11/16	5-3/8	6-7/16	7-11/16
Max. Hook Size (W / in.)	15/16	1-3/16	1-1/2	1-3/4	2-1/8
Overall Dimensions (L x W x H / in.)	7-3/8 x 11-13/16 x 4-5/8	8-3/8 x 12-1/2 x 5-1/8	10-3/16 x 13 x 6-5/16	12-3/8 x 13-3/4 x 7-7/16	14-13/16 x 14-13/16 x 8-9/16
Weight (lbs.)	11	17	31	51	87