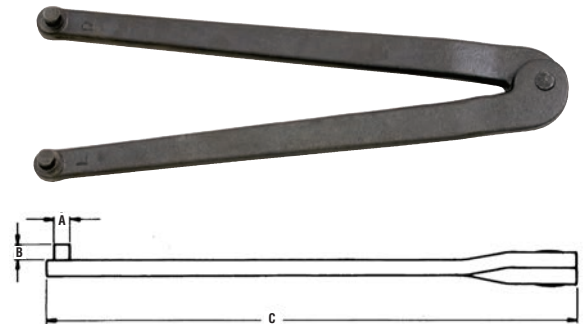


Adjustable Face Spanner

Extreme Capacity	Diameter of Pin	Length of Pin	Overall Length	Weight Each (lb)	Part Number	Std. Pkg. Qty.
	A	B	C		Industrial Black	
2	3/16	7/32	6-1/4	.31	482	6
3	1/4	9/32	8-1/4	.52	483	6
4	5/16	11/32	10-1/4	1.02	484	6



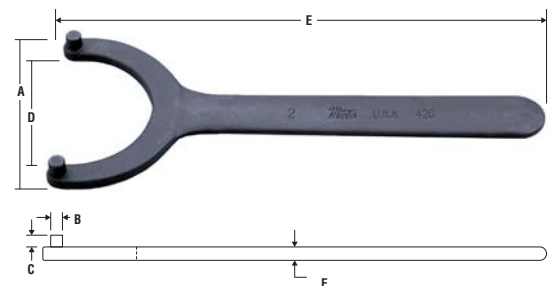
Pin Spanner

For Circle Diameter	Diameter of Pin	Length of Pin	Overall Length	Weight Each (lb)	Part Number	Std. Pkg. Qty.
	A	B	C		Industrial Black	
1	3/16	3/16	4	.08	452	6
1-1/4	13/64	3/16	4-1/2	.11	453	6
1-1/2	7/32	7/32	5	.13	454	6
1-3/4	15/64	7/32	5-1/2	.17	455	6
2	1/4	1/4	6	.20	456	6
2-1/4	17/64	1/4	6-1/2	.24	457	6
2-1/2	9/32	9/32	7	.28	458	6
2-3/4	19/64	9/32	7-1/2	.37	459	6
3	5/16	5/16	8	.43	460	6
3-1/4	21/64	5/16	8-1/2	.47	461	6
3-1/2	11/32	11/32	9	.50	462	6
3-3/4	23/64	11/32	9-1/2	.59	463	6
4	3/8	3/8	10	.69	464	6
5	7/16	7/16	12	1.15	466	6
6	1/2	1/2	14	1.90	468	6



Face Spanner

Center Distance of Pins	Pins		Span of Jaws in Clear	Length from Center of Pins	Thickness	Weight Each (lb)	Part No.	Std. Pkg. Qty.
	Diameter	Length					Industrial Black	
A	B	C	D	E	F			
1	3/16	3/16	11/16	4-1/2	3/16	.12	418	6
1-1/4	7/32	7/32	7/8	5	3/16	.13	420	6
1-1/2	7/32	7/32	1-1/8	5-1/2	3/16	.23	422	6
1-3/4	7/32	7/32	1-3/8	6	7/32	.30	424	6
2	1/4	1/4	1-19/32	6-1/2	7/32	.39	426	6
2-1/4	1/4	1/4	1-27/32	7	7/32	.42	428	6
2-1/2	9/32	9/32	2-1/32	7-1/2	1/4	.52	430	6
2-3/4	9/32	9/32	2-9/32	8	1/4	.59	432	6
3	5/16	5/16	2-1/2	8-1/2	1/4	.70	434	6
3-1/4	5/16	5/16	2-3/4	9-1/8	1/4	.82	436	6
3-1/2	5/16	5/16	3	9-3/4	1/4	.89	438	6
3-3/4	3/8	3/8	3-3/16	10-3/8	1/4	1.0	440	6
4	3/8	3/8	3-7/16	11	1/4	1.1	442	6



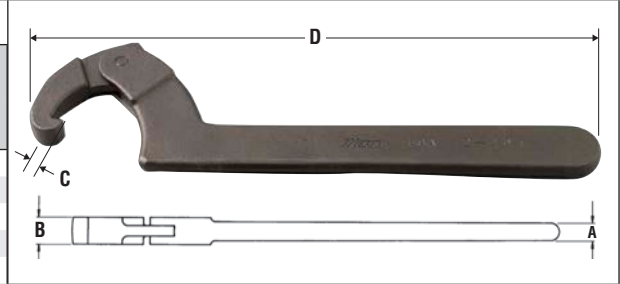
Spanner Wrenches & Sets

– Adjustable



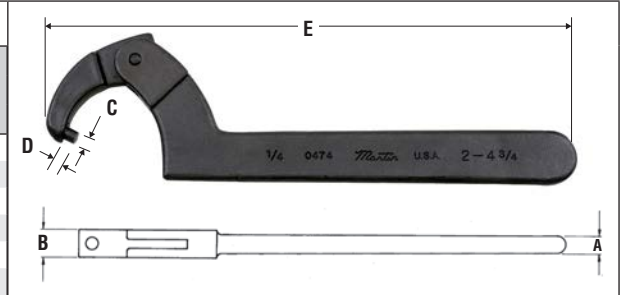
Adjustable Hook Spanner

Capacity Range	Thickness of Handle	Thickness of Hook	Depth of Hook	Overall Length	Weight Each (lb)	Part No.	Std. Pkg. Qty.
	A	B	C	D		Industrial Black	
3/4 to 2	1/4	3/8	1/8	6-1/2	.23	471	6
1-1/4 to 3	9/32	1/2	5/32	8-1/16	.43	472	6
2 to 4-3/4	11/32	17/32	7/32	11-3/16	1.03	474	6
4-1/2 to 6-1/4	11/32	17/32	1/4	12	1.07	474A	6
6-1/8 to 8-3/4	11/32	17/32	5/16	13-5/16	1.40	474B	6



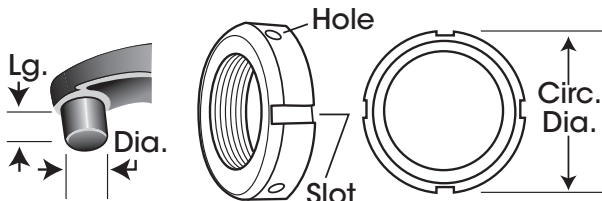
Adjustable Pin Spanner

Capacity Range	Thickness		Pin Size		Overall Length	Weight Each (lb)	Part No.	Std. Pkg. Qty.
	Handle	Hook	Diameter	Length				
	A	B	C	D				
3/4 to 2	1/4	3/8	1/8	1/8	6-1/2	.23	0471	6
3/4 to 2	1/4	3/8	3/16	5/32	6-1/2	.23	0471A	6
1-1/4 to 3	9/32	1/2	3/16	3/16	8-1/16	.42	0472	6
1-1/4 to 3	9/32	1/2	1/4	7/32	8-1/16	.42	0472A	6
2 to 4-3/4	11/32	17/32	1/4	1/4	11-3/16	.99	0474	6
4-1/2 to 6-1/4	11/32	17/32	3/8	1/4	12-3/16	1.08	0474A	6

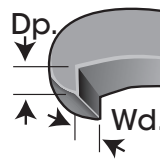


Adjustable Spanner Wrench Sets

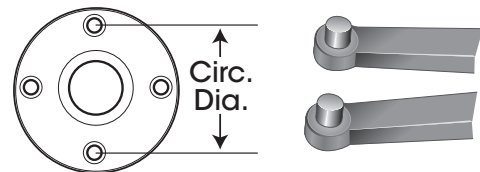
SPW6K		SHW5K			
Image	CAPACITY RANGE	Image	CAPACITY RANGE		
	PART NO.		PART NO.		
	3/4 to 2		471	3/4 to 2	471
	3/4 to 2		471A	1-1/4 to 3	472
	1-1/4 to 3		472	2 to 4-3/4	474
	1-1/4 to 3		472A	4-1/2 to 6-1/4	474A
	2 to 4-3/4		474	6-1/8 to 8-3/4	474B
	4-1/2 to 6-1/4	0474A	Kit Bag	C60B	
	Kit Bag	C60B			



Adjustable Pin Spanner Pins fit into the holes or slots on the side of the flange or collar.



Adjustable Hook Spanner



Pins fit into the holes or slots on the face of the flange or collar.

Adjustable Face Spanner