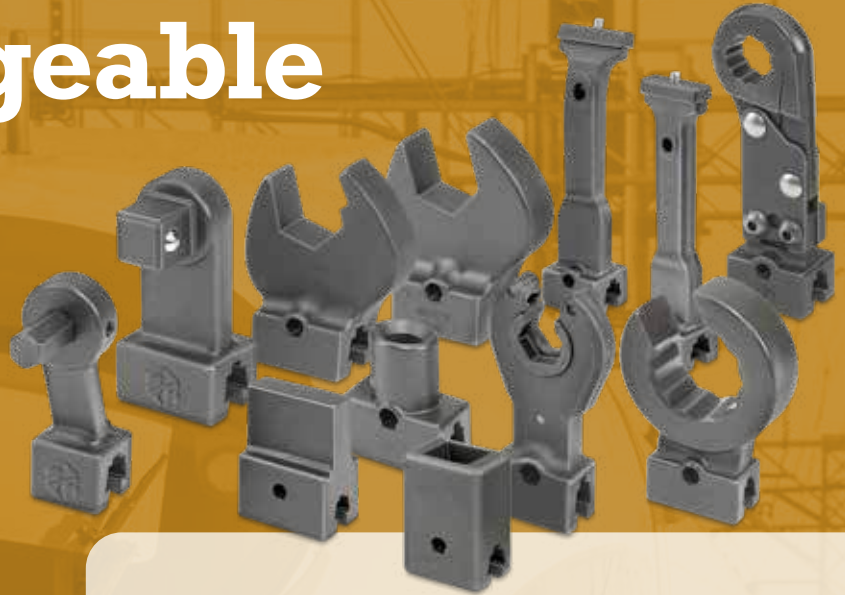


# Interchangeable Heads

Mixed model manufacturing requires flexible tooling. Our interchangeable head system is the most flexible tooling system found anywhere in the world. Any dovetail head we make will fit on any dovetail wrench we make.



## Dovetail vs. Quick Change Wrenches

Dovetail wrenches use our CART tool to change heads. Quick Change versions require only your thumb.

These heads are available on the Exacta 2 1100, 1200, and 1250 Series digital torque wrenches.



## Custom Solutions

In addition to our established line of interchangeable heads, SR is proud to offer custom solutions to meet your unique torque needs. For more information on custom interchangeable heads and other solutions please contact SR customer service world wide at +1 847-455-867

## Ratchet Style

<b>SDRF</b> Fine-tooth Ratchet .....	20
<b>SDRT</b> Square Drive Ratchet .....	21
Small Ratchet with Larger Drive Size .....	21
Socket Lock Pin .....	21
Hold & Drive Square Drive Ratchet .....	21
<b>Ratchet Renewal Kits</b> .....	21

## Wrench Style Heads

<b>OE</b> Open End.....	22
<b>ROE</b> Ratcheting Open End .....	24
<b>BH</b> Box Head.....	25
<b>FN</b> Flare Nut .....	26

## Drive Style

<b>HD</b> Hex Drive.....	27
<b>SD</b> Square Drive.....	27

## Specialty and Adapters

Crowfoot Adapter .....	27
<b>RFN</b> Ratcheting Flare Nut .....	28
<b>LTCE Series</b> and <b>LTCE-15 Series</b> : Straight and 15 Degree Angled Extension .....	28
<b>STA</b> Standard Tooling Adapters.....	29
<b>Adapters for DIN Style Heads</b> .....	29
<b>Adapters for Round Style Heads</b> .....	29

## What is the Common Centerline? Why is it important?

<http://www.srtorque.com/resources/understanding-the-common-centerline/>



**Sturtevant  
Richmont**

# SDRF

## Fine-tooth Ratchet Interchangeable Head

### Features and Characteristics

- 4.5 degrees of swing arc required to engage the next tooth
- Smooth operation
- Highly durable
- Easy to rebuild with our fine-tooth ratchet renewal kit
- Black oxide exterior
- Sealed compartment to protect the gear from debris
- Reverse lever on back of ratchet

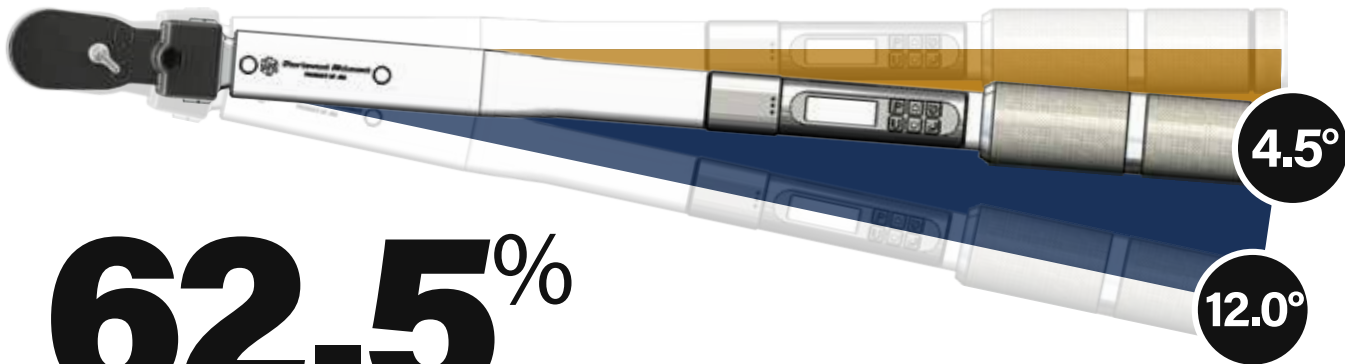


Available in 1/4"  
and 3/8" Drive sizes



The SDRF Interchangeable Head joins over 200 interchangeable heads and over 80 compatible tools in the Sturtevant Richmont lineup, offering you the strength, reliability, and accuracy you demand.

SDRF Series Fine Tooth Ratchet Interchangeable Heads			
Part No.	Model	Torque Capacity	Retention Type
819340	SDRF 3/8	960 in lb	Ball
819341	SDRF 1/4	250 in lb	Ball



# 62.5%

Shorter Swing Length  
*vs. coarse 30-tooth ratchet*



Both sizes feature a sealed compartment with reverse lever on back



- Do not exceed rated torque
- Do not use to break fasteners loose
- Periodic recalibration is necessary to maintain accuracy
- See safety precautions at [srtorque.com](http://srtorque.com)

## SQUARE DRIVE RATCHET (SDRT)

1<sup>1</sup>/<sub>6</sub>" Common Centerline / 36.5 mm Common Centerline

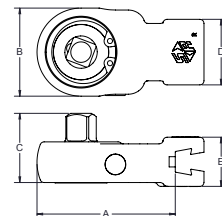
Part No.	Model	Drive Size	A (in.)	B (in.)	C (in.)	D (in.)	E (in.)	Max Torque (in. lbs.)
809504	SDRT - 1/4	1/4"	1.875	1.375	.9375	0.75	0.625	250
809505	SDRT - 3/8	3/8"	2.00	1.50	1.25	1.00	0.5625	1250
809506	SDRT - 1/2	1/2"	2.50	1.75	1.25	1.25	0.75	2500
809507*	SDRT - 3/4	3/4"	5.734	2.6875	1.984	1.50	1.00	4800

\*3<sup>1</sup>/<sub>8</sub>" Common Centerline / 98.4mm Common Centerline

## SMALL RATCHET BODY WITH LARGER DRIVE SIZE

1<sup>1</sup>/<sub>6</sub>" Common Centerline / 36.5 mm Common Centerline

Part No.	Model	Drive Size	A (in.)	B (in.)	C (in.)	D (in.)	E (in.)	Max Torque (in. lbs.)
853752	SDRT 1/4 with 3/8 Square Drive	3/8"	1.875	1.375	.9375	0.75	0.625	250
853395	SDRT 3/8 with 1/2 Square Drive	1/2"	2.00	1.50	1.25	1.00	0.5625	1250
809508	SDRT 1/2 with 3/4 Square Drive	3/4"	2.50	1.75	1.25	1.25	0.75	2500



## SOCKET LOCK PIN

1<sup>1</sup>/<sub>6</sub>" Common Centerline / 36.5 mm Common Centerline

Part No.	Model	Drive Size	A (in.)	B (in.)	C (in.)	D (in.)	E (in.)	Max Torque (in. lbs.)
853304	SDRT 1/4 SOC LOCK PIN	1/4"	1.875	1.375	0.9375	0.75	0.625	250
853305	SDRT 3/8 SOC LOCK PIN	3/8"	2.00	1.50	1.25	1.00	0.5625	1250
853548	SDRT 1/2 SOC LOCK PIN	1/2"	2.50	1.75	1.25	1.25	0.75	2500



## HOLD & DRIVE SQUARE DRIVE RATCHET (SDRT)

1<sup>1</sup>/<sub>6</sub>" Common Centerline / 36.5 mm Common Centerline

Part No.	Model	Drive Size	Hole Size (in.)	Hex Key Size (in.)	A (in.)	B (in.)	C (in.)	D (in.)	E (in.)	Max Torque (in. lbs.)
853619	SDRT-1/4 with 1/8 hole	1/4"	1/8	3/32	1.875	1.375	.9375	0.75	0.625	250
853590	SDRT-1/4 with 9/64 hole	1/4"	9/64	1/8	1.875	1.375	.9375	0.75	0.625	250
853656	SDRT-3/8 with 1/8 hole	3/8"	1/8	3/32	2.00	1.50	1.25	1.00	0.5625	1250
853246	SDRT-3/8 with 5/32 hole	3/8"	5/32	1/8	2.00	1.50	1.25	1.00	0.5625	1250
853364	SDRT- 1/2 with 5/32	1/2"	5/32	1/8	2.50	1.75	1.25	1.25	0.75	2500



## RATCHET RENEWAL KITS

for all ratchet equipped torque wrenches and SDRT heads

Part No.	Description
816998	1/4" Ratchet Renewal Kit for ratchet 809504
816958	3/8" Ratchet Renewal Kit for ratchet 809505
816956	1/2" Ratchet Renewal Kit for ratchet 809506
816999	3/4" Ratchet Renewal Kit for ratchet 809507
816959	3/8" Spindle with 1/2" Drive Ratchet Renewal Kit for ratchet 853395
816957	1/2" Spindle with 3/4" Drive Ratchet Renewal Kit for ratchet 809508



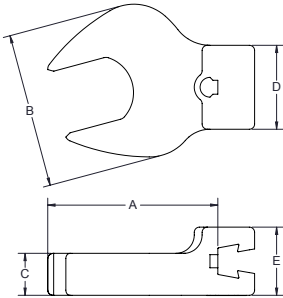
**WARNING**



- Do not exceed rated torque
- Do not use to break fasteners loose
- Periodic recalibration is necessary to maintain accuracy
- Read safety precautions on page 59

## OPEN END (OE)

1<sup>1</sup>/<sub>16</sub>" Common Centerline / 36.5 mm Common Centerline



Part No.	Model	Size	A (in.)	B (in.)	C (in.)	D (in.)	E (in.)	Max Torque (in. lbs.)
819000	OE - 1/4	1/4	1.625	0.75	0.25	0.75	0.6875	100
819001	OE - 5/16	5/16	1.625	0.75	0.25	0.75	0.6875	150
819002	OE - 3/8	3/4	1.8125	1.0625	0.3125	0.75	0.6875	200
819003	OE - 7/16	7/16	1.8125	1.0625	0.3125	0.75	0.6875	300
819004	OE - 1/2	1/2	1.9375	1.3125	0.40625	0.75	0.6875	350
819005	OE - 9/16	9/16	1.9375	1.3125	0.40625	0.75	0.6875	400
819006	OE - 5/8	5/8	1.9375	1.59375	0.4375	0.875	0.6875	600
819007	OE - 11/16	11/16	1.9375	1.59375	0.4375	0.875	0.6875	800
819008	OE - 3/4	3/4	2.0	1.84375	0.5	1.0	0.8125	1000
819009	OE - 13/16	13/16	2.0	1.84375	0.5	1.0	0.8125	1250
819010	OE - 7/8	7/8	2.0	2.125	0.5	1.25	0.8125	1500
819011	OE - 15/16	15/16	2.0	2.125	0.5	1.25	0.8125	1750
819012	OE - 1	1	2.375	2.3125	0.5	1.25	0.8125	2000
819013	OE - 1 1/16	1 1/16	2.375	2.3125	0.5	1.25	0.8125	2250
819014	OE - 1 1/8	1 1/8	2.3125	2.75	0.5	1.25	0.8125	2500
819015	OE - 1 3/16	1 3/16	2.3125	2.75	0.5	1.25	0.8125	2750
819016	OE - 1 1/4	1 1/4	2.3125	2.75	0.5	1.25	0.8125	3000

## OPEN END (OE)

3<sup>1</sup>/<sub>16</sub>" Common Centerline / 98.4mm Common Centerline

Part No.	Model	Size	A (in.)	B (in.)	C (in.)	D (in.)	E (in.)	Max Torque (in. lbs.)
819724	OE-1 <sup>1</sup> / <sub>16</sub>	1 <sup>1</sup> / <sub>16</sub>	4.625	2.9375	.625	1.50	1	4800
819725	OE-1 <sup>1</sup> / <sub>8</sub>	1 <sup>1</sup> / <sub>8</sub>	4.6094	2.9375	.625	1.50	1	4800
819726	OE-1 <sup>1</sup> / <sub>8</sub>	1 <sup>1</sup> / <sub>8</sub>	4.6094	2.9375	.625	1.50	1	4800
819727	OE-1 <sup>1</sup> / <sub>2</sub>	1 <sup>1</sup> / <sub>2</sub>	4.5938	2.9375	.625	1.50	1	4800
819728	OE-1 <sup>1</sup> / <sub>8</sub>	1 <sup>1</sup> / <sub>8</sub>	4.5781	2.9375	.625	1.50	1	4800
819729	OE-1 <sup>1</sup> / <sub>8</sub>	1 <sup>1</sup> / <sub>8</sub>	4.5625	2.9375	.625	1.50	1	4800
819730	OE-1 <sup>11</sup> / <sub>16</sub>	1 <sup>11</sup> / <sub>16</sub>	4.5625	2.9375	.625	1.50	1	4800
819731	OE-1 <sup>1</sup> / <sub>4</sub>	1 <sup>1</sup> / <sub>4</sub>	4.5469	2.9375	.625	1.50	1	4800
819732	OE-1 <sup>13</sup> / <sub>16</sub>	1 <sup>13</sup> / <sub>16</sub>	4.5156	2.9375	.625	1.50	1	4800
819733	OE-1 <sup>7</sup> / <sub>8</sub>	1 <sup>7</sup> / <sub>8</sub>	4.9375	4.34375	.625	1.50	1	4800
819734	OE-1 <sup>15</sup> / <sub>16</sub>	1 <sup>15</sup> / <sub>16</sub>	4.93	4.34375	.625	1.50	1	4800
819735	OE-2	2	4.9219	4.34375	.625	1.50	1	4800
819736	OE-2 <sup>1</sup> / <sub>16</sub>	2 <sup>1</sup> / <sub>16</sub>	4.9063	4.34375	.625	1.50	1	4800
819737	OE-2 <sup>1</sup> / <sub>8</sub>	2 <sup>1</sup> / <sub>8</sub>	4.9063	4.34375	.625	1.50	1	4800
819738	OE-2 <sup>3</sup> / <sub>16</sub>	2 <sup>3</sup> / <sub>16</sub>	4.90	4.34375	.625	1.50	1	4800
819739	OE-2 <sup>1</sup> / <sub>4</sub>	2 <sup>1</sup> / <sub>4</sub>	4.875	4.34375	.625	1.50	1	4800
819740	OE-2 <sup>5</sup> / <sub>16</sub>	2 <sup>5</sup> / <sub>16</sub>	4.80	4.34375	.625	1.50	1	4800
819741	OE-2 <sup>3</sup> / <sub>8</sub>	2 <sup>3</sup> / <sub>8</sub>	4.8594	4.34375	.625	1.50	1	4800
819742	OE-2 <sup>1</sup> / <sub>2</sub>	2 <sup>1</sup> / <sub>2</sub>	4.8438	4.34375	.625	1.50	1	4800
819743	OE-2 <sup>1</sup> / <sub>2</sub>	2 <sup>1</sup> / <sub>2</sub>	4.8281	4.34375	.625	1.50	1	4800
819744	OE-2 <sup>1</sup> / <sub>16</sub>	2 <sup>1</sup> / <sub>16</sub>	4.8125	4.34375	.625	1.50	1	4800
819745	OE-2 <sup>3</sup> / <sub>8</sub>	2 <sup>3</sup> / <sub>8</sub>	4.7969	4.34375	.625	1.50	1	4800
819746	OE-2 <sup>11</sup> / <sub>16</sub>	2 <sup>11</sup> / <sub>16</sub>	5.4844	5.625	.625	1.50	1	4800
819747	OE-2 <sup>1</sup> / <sub>4</sub>	2 <sup>1</sup> / <sub>4</sub>	5.4844	5.625	.625	1.50	1	4800
819748	OE-2 <sup>13</sup> / <sub>16</sub>	2 <sup>13</sup> / <sub>16</sub>	5.4844	5.625	.625	1.50	1	4800
819749	OE-2 <sup>3</sup> / <sub>4</sub>	2 <sup>3</sup> / <sub>4</sub>	5.4844	6.0	.625	1.50	1	4800
819750	OE-2 <sup>15</sup> / <sub>16</sub>	2 <sup>15</sup> / <sub>16</sub>	5.4844	6.0	.625	1.50	1	4800
819751	OE-3	3	5.4844	6.0	.625	1.50	1	4800
819752	OE-3 <sup>1</sup> / <sub>4</sub>	3 <sup>1</sup> / <sub>4</sub>	5.4063	6.0	.625	1.50	1	4800

### WARNING

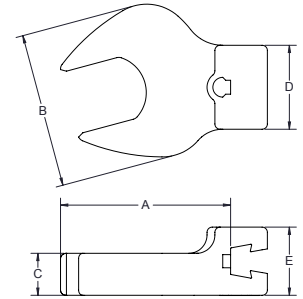


- Do not exceed rated torque
- Do not use to break fasteners loose
- Periodic recalibration is necessary to maintain accuracy
- Read safety precautions on page 59

## OPEN END (OE)

1 $\frac{1}{8}$ " Common Centerline / 36.5 mm Common Centerline

Part No.	Model	Size (mm)	A (mm)	B (mm)	C (mm)	D (mm)	E (mm)	Torque Rating (Nm)
809294	OE-5 mm	5	43.18	20.32	7.62	20.32	17.78	8
809290	OE-6 mm	6	43.18	20.32	7.62	20.32	17.78	9
809291	OE-7 mm	7	43.18	20.32	7.62	20.32	17.78	11
809292	OE-8 mm	8	43.18	20.32	7.62	20.32	17.78	16
809293	OE-9 mm	9	45.72	27.94	7.62	20.32	17.78	22
819943	OE-10 mm	10	45.72	27.94	7.62	20.32	17.78	22
819944	OE-11 mm	11	45.72	27.94	7.62	20.32	17.78	34
809226	OE-12 mm	12	48.26	33.02	10.16	20.32	17.78	39
819945	OE-13 mm	13	48.26	33.02	10.16	20.32	17.78	39
819946	OE-14 mm	14	48.26	33.02	10.16	20.32	17.78	45
809227	OE-15 mm	15	48.26	40.64	10.16	22.86	17.78	67
819947	OE-16 mm	16	48.26	40.64	10.16	22.86	17.78	67
819948	OE-17 mm	17	48.26	40.64	10.16	22.86	17.78	79
809228	OE-18 mm	18	48.26	40.64	10.16	22.86	17.78	90
819949	OE-19 mm	19	50.8	45.72	12.70	25.40	17.78	113
819950	OE-21 mm	21	50.8	45.72	12.70	25.40	20.32	140
819951	OE-22 mm	22	50.8	53.34	12.70	33.02	20.32	169
819952	OE-24 mm	24	50.8	53.34	12.70	33.02	20.32	197
809229	OE-27 mm	27	55.88	58.42	12.70	33.02	20.32	254
819956	OE-30 mm	30	58.42	71.12	12.70	33.02	20.32	310
819958	OE-32 mm	32	58.42	71.12	12.70	33.02	20.32	338



## OPEN END (OE)

3 $\frac{3}{8}$ " Common Centerline / 98.4mm Common Centerline

Part No.	Model	Size (mm)	A (mm)	B (mm)	C (mm)	D (mm)	E (mm)	Torque Rating (Nm)
819761	OE-33 mm	33	117.48	74.61	15.88	38.1	25.4	350
819762	OE-34 mm	34	117.48	74.61	15.88	38.1	25.4	350
819763	OE-35 mm	35	117.08	74.61	15.88	38.1	25.4	350
819766	OE-36 mm	36	117.08	74.61	15.88	38.1	25.4	350
819764	OE-37 mm	37	116.68	74.61	15.88	38.1	25.4	400
819765	OE-38 mm	38	116.68	74.61	15.88	38.1	25.4	400
819771	OE-40 mm	40	116.28	74.61	15.88	38.1	25.4	400
819755	OE-41 mm	41	116.28	74.61	15.88	38.1	25.4	400
819769	OE-42 mm	42	115.89	74.61	15.88	38.1	25.4	400
819774	OE-44 mm	44	125.41	110.33	15.88	38.1	25.4	400
853545	OE-46 mm	46	125.41	110.33	15.88	38.1	25.4	400
819770	OE-48 mm	48	124.62	110.33	15.88	38.1	25.4	400
819756	OE-50 mm	50	125.02	110.33	15.88	38.1	25.4	400
819757	OE-55 mm	55	124.22	110.33	15.88	38.1	25.4	400
819753	OE-60 mm	60	123.43	110.33	15.88	38.1	25.4	400

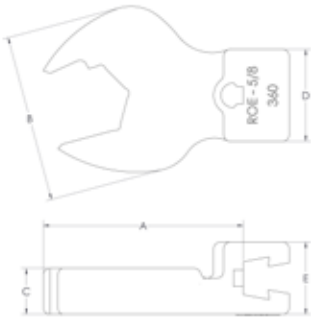


- Do not exceed rated torque
- Do not use to break fasteners loose
- Periodic recalibration is necessary to maintain accuracy
- Read safety precautions on page 59

# RATCHETING OPEN END (ROE)

1 7/8" Common Centerline / 36.5 mm Common Centerline

Slight disengagement from the fastener allows operator to rapidly rotate wrench.



Part No.	Model	Hex Size (in.)	A (in.)	B (in.)	C (in.)	D (in.)	E (in.)	Max Torque (in. lbs.)
819351	ROE 5/16 V Series	5/16	1.6406	0.75	0.25	0.75	0.6875	90
819352	ROE 3/8 V Series	3/8	1.625	1.0625	0.3125	0.75	0.6875	120
819353	ROE 7/16 V Series	7/16	1.7188	1.0625	0.3125	0.75	0.6875	180
819354	ROE 1/2 V Series	1/2	1.7188	1.3125	0.4063	0.75	0.6875	210
819355	ROE 9/16 V Series	9/16	1.8438	1.3125	0.4063	0.75	0.6875	240
819356	ROE 5/8 V Series	5/8	1.8438	1.5938	0.4375	0.75	0.6875	360
819357	ROE 11/16 V Series	11/16	1.875	1.5938	0.4375	0.75	0.6875	480
819358	ROE 3/4 V Series	3/4	2.0	1.8438	0.5	1.0	0.8125	600
819359	ROE 13/16 V Series	13/16	1.9688	1.8438	0.5	1.0	0.8125	750
819360	ROE 7/8 V Series	7/8	1.9688	2.125	0.5	1.25	1.8125	900
819361	ROE 15/16 V Series	15/16	1.9531	2.125	0.4063	0.8125	1.25	1050
819362	ROE 1 1/8 V Series	1 1/8	2.2969	2.25	0.5	1.25	1.25	1500

Part No.	Model	Hex Size (mm)	A (mm)	B (mm)	C (mm)	D (mm)	E (mm)	Max Torque (Nm)
819363	ROE-10 mm V Series	10	43.18	27.94	7.62	20.32	17.78	13
819364	ROE-11 mm V Series	11	43.18	27.94	7.62	20.32	17.78	20
819365	ROE-12 mm V Series	12	45.72	33.02	7.62	20.32	17.78	23
819366	ROE-13 mm V Series	13	45.72	33.02	7.62	20.32	17.78	23
819367	ROE-14 mm V Series	14	45.72	33.02	7.62	20.32	17.78	27
819368	ROE-15 mm V Series	15	45.72	40.64	7.62	22.86	17.78	27
819369	ROE-16 mm V Series	16	45.72	40.64	7.62	22.86	17.78	40
819370	ROE-17 mm V Series	17	45.72	40.64	7.62	22.86	17.78	54
819371	ROE-18 mm V Series	18	45.72	40.64	7.62	22.86	17.78	54
819372	ROE-19 mm V Series	19	48.26	45.72	10.16	25.4	20.32	68
819373	ROE-22 mm V Series	22	50.8	53.34	10.16	33.02	20.32	101
819374	ROE-24 mm V Series	24	50.8	53.34	10.16	33.02	20.32	118
819375	ROE-27 mm V Series	27	53.34	58.42	12.7	33.02	20.32	152
819376	ROE-28 mm V Series	28	53.34	58.42	12.7	33.02	20.32	170
819377	ROE-29 mm V Series	29	58.42	71.12	12.7	33.02	20.32	152



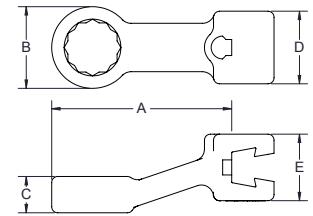
- Do not exceed rated torque
- Do not use to break fasteners loose
- Periodic recalibration is necessary to maintain accuracy
- Read safety precautions on page 59

# BOX HEAD (BH)

1/16" Common Centerline / 36.5 mm Common Centerline

Part No.	Model	Size (in.)	A (in.)	B (in.)	C (in.)	D (in.)	E (in.)	Max Torque (in. lbs.)
819060	BH - 1/4	1/4	1.7031	0.53125	0.2813	0.75	0.6875	250
819061	BH - 5/16	5/16	1.7031	0.53125	0.2813	0.75	0.6875	350
819062	BH - 3/8	3/8	1.75	0.625	0.2813	0.75	0.6875	450
819063	BH - 7/16	7/16	1.8125	0.75	0.3494	0.75	0.6875	650
819064	BH - 1/2	1/2	1.8594	0.8438	0.375	0.75	0.6875	850
819065	BH - 9/16	9/16	2.0	1.0	0.4063	0.875	0.6875	1050
819066	BH - 5/8	5/8	2.0	1.0625	0.5469	0.9375	0.8125	1250
819067	BH - 11/16	11/16	2.0	1.125	0.5	0.9375	0.8125	1450
819068	BH - 3/4	3/4	2.0625	1.25	0.5469	1.0	0.8125	1800
819070	BH - 7/8	7/8	2.25	1.3125	0.625	1.25	0.8125	2400
819071	BH - 15/16	15/16	2.25	1.50	0.6563	1.25	0.8125	2700
819072	BH - 1	1	2.25	1.5625	0.7188	1.25	0.8125	3000
819073	BH - 1 1/16	1 1/16	2.25	2.0625	0.875	1.25	0.8125	3150
819074	BH - 1 1/8	1 1/8	2.5	2.0625	0.875	1.25	0.8125	3300
819075	BH - 1 1/4	1 1/4	2.5	2.0625	0.875	1.25	0.8125	3600

Part No.	Model	Size (mm)	A (mm)	B (mm)	C (mm)	D (mm)	E (mm)	Max. Torque (Nm)
809301	BH-7 mm	7	43.18	12.7	7.62	20.32	20.32	28
809302	BH-8 mm	8	43.18	12.7	7.62	20.32	20.32	39
809303	BH-9 mm	9	45.72	15.24	7.62	20.32	20.32	50
809230	BH-10 mm	10	45.72	15.24	7.62	20.32	20.32	50
809231	BH-11 mm	11	45.72	20.32	10.16	20.32	20.32	73
809304	BH-12 mm	12	45.72	20.32	10.16	20.32	20.32	96
809232	BH-13 mm	13	45.72	20.32	10.16	20.32	20.32	96
809233	BH-14 mm	14	48.26	25.4	10.16	22.86	20.32	119
809234	BH-15 mm	15	50.8	27.94	12.7	25.4	22.86	141
809305	BH-16 mm	16	50.8	27.94	12.7	25.4	22.86	141
809235	BH-17 mm	17	50.8	27.94	12.7	25.4	22.86	163
809306	BH-18 mm	18	50.8	27.94	12.7	25.4	22.86	163
809236	BH-19 mm	19	53.34	33.02	15.24	25.4	22.86	203
809309	BH-20 mm	20	53.34	33.02	15.24	25.4	22.86	225
809307	BH-21 mm	21	53.34	33.02	15.24	25.4	22.86	237
809308	BH-22 mm	22	55.88	35.56	15.24	33.02	22.86	271
809237	BH-24 mm	24	55.88	35.56	17.78	33.02	22.86	305
809352	BH-27 mm	27	55.88	40.64	17.78	33.02	22.86	355



## WARNING



- Do not exceed rated torque
- Do not use to break fasteners loose
- Periodic recalibration is necessary to maintain accuracy
- Read safety precautions on page 59

### Dovetail vs. Quick Change Wrenches

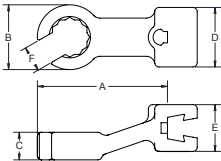
Dovetail wrenches use our CART tool to change heads. Quick Change versions require only your thumb.

These heads are available on the Exacta 2 1100, 1200, 1250 and 1350 Series digital torque wrenches.



# FLARE NUT (FN)

1 1/16" Common Centerline / 36.5 mm Common Centerline



Part No.	Model	Size (in.)	A (in.)	B (in.)	C (in.)	D (in.)	E (in.)	F (in.)	Max Torque (in. lbs.)
819025	FN-1/4	1/4	1.75	0.625	0.3438	0.75	0.6875	0.1875	100
819026	FN-5/16	5/16	1.8125	0.625	0.3594	0.75	0.6875	0.1875	150
819027	FN-3/8	3/8	1.8594	0.8438	0.375	0.75	0.6875	0.2813	200
819028	FN-7/16	7/16	1.8594	0.8438	0.375	0.75	0.6875	0.3438	250
819029	FN-1/2	1/2	1.9688	1.0625	0.4063	0.875	0.6875	0.375	300
819030	FN-9/16	9/16	1.9688	1.0625	0.4688	1.0	0.8125	0.4375	350
819031	FN-5/8	5/8	2.0	1.125	0.5313	1.0	0.8125	0.5313	400
819032	FN-11/16	11/16	2.0625	1.3125	0.54688	1.0	0.8125	0.5313	475
819033	FN-3/4	3/4	2.0625	1.3125	0.54688	1.0	0.8125	0.5313	600
819034	FN-13/16	13/16	2.25	1.00	0.625	1.25	0.8125	0.625	700
819035	FN-7/8	7/8	2.25	1.50	0.65625	1.25	0.8125	0.6875	800
819036	FN-15/16	15/16	2.375	1.5625	0.7188	1.25	0.8125	0.7188	900
819037	FN-1	1	2.5	1.5625	0.7188	1.25	0.8125	0.75	1000
819038	FN-1 1/16	1 1/16	2.5	1.5625	0.875	1.25	0.8125	0.75	1050

Part No.	Model	Size (mm)	A (mm)	B (mm)	C (mm)	D (mm)	E (mm)	F (mm)	Max Torque (Nm)
809243	FN-8 mm	8	45.72	20.32	10.16	20.32	20.32	7.62	16
809217	FN-9 mm	9	45.72	20.32	10.16	20.32	20.32	7.62	19
809218	FN-10 mm	10	45.72	20.32	10.16	20.32	20.32	7.62	22
809221	FN-11 mm	11	45.72	20.32	10.16	20.32	20.32	7.62	28
809241	FN-12 mm	12	48.26	25.40	10.16	22.86	20.32	10.16	30
809219	FN-13 mm	13	48.26	25.40	10.16	22.86	20.32	10.16	33
809220	FN-14 mm	14	50.80	27.94	12.70	25.40	20.32	10.16	40
809222	FN-15 mm	15	50.80	27.94	12.70	25.40	20.32	10.16	45
809238	FN-16 mm	16	50.80	27.94	12.70	25.40	20.32	12.70	50
809223	FN-17 mm	17	53.34	33.02	15.24	25.40	20.32	12.70	54
809239	FN-18 mm	18	53.34	33.02	15.24	25.40	20.32	15.24	61
809224	FN-19 mm	19	53.34	33.02	15.25	25.40	20.32	15.24	68
809240	FN-21 mm	21	53.34	38.10	17.78	33.02	20.32	17.78	80
809242	FN-22 mm	22	55.88	38.10	17.78	33.02	20.32	17.78	90
809225	FN-24 mm	24	55.88	40.64	17.78	33.02	20.32	17.78	105

## WARNING



- Do not exceed rated torque
- Do not use to break fasteners loose
- Periodic recalibration is necessary to maintain accuracy
- Read safety precautions on page 59

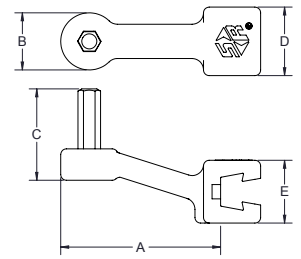


## HEX DRIVE (HD)

1 1/16" Common Centerline / 36.5 mm Common Centerline

Part No.	Model	Size (in.)	A (in.)	B (in.)	C (in.)	D (in.)	E (in.)	Max. Torque (in. lbs.)
819687	HD-3/32	3/32	1.7	0.5	0.8	0.8	0.7	30
819689	HD-1/8	1/8	1.7	0.5	0.8	0.8	0.7	70
853032	HD-9/64	9/64	1.7	0.5	0.8	0.8	0.7	70
819691	HD-5/32	5/32	1.7	0.5	1.0	0.8	0.7	135
819692	HD-3/16	3/16	1.7	0.5	1.0	0.8	0.7	235
819693	HD-7/32	7/32	1.8	0.6	1.0	0.8	0.7	340
819694	HD-1/4	1/4	1.8	0.6	1.0	0.8	0.7	450
819695	HD-5/16	5/16	1.8	0.8	1.0	0.8	0.7	850
819696	HD-3/8	3/8	1.8	0.8	1.0	0.8	0.7	850
819701	HD-3/4	3/4	2.2	1.4	2.0	1.3	0.8	2400
819702	HD-7/8	7/8	2.2	1.5	2.0	1.3	0.8	2700

Part No.	Model	Size (mm)	A (mm)	B (mm)	C (mm)	D (mm)	E (mm)	Max. Torque (Nm)
809315	HD-4 mm	4	43.18	12.70	25.40	20.32	2.32	14
809316	HD-5 mm	5	43.18	12.70	25.40	20.32	20.32	27
809317	HD-6 mm	6	45.72	15.24	25.40	20.32	20.32	37
809328	HD-8 mm	8	45.72	20.32	25.40	20.32	20.32	95
809330	HD-10 mm	10	48.26	25.40	25.40	22.86	20.32	141

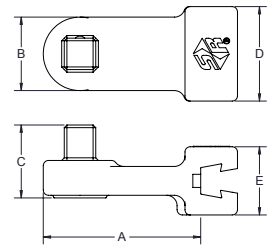


## SQUARE DRIVE (SD)

1 1/16" Common Centerline / 36.5 mm Common Centerline

Part No.	Model	Drive Size (in.)	A (in.)	B (in.)	C (in.)	D (in.)	E (in.)	Max Torque (in. lbs.)
819057	SD - 1/4	1/4	1.75	0.875	0.75	0.625	0.6875	250
819058	SD - 3/8	3/8	1.875	0.875	0.75	0.625	0.6875	1250
819059	SD - 1/2	1/2	1.9375	0.9375	0.75	0.625	0.6875	2500
819119*	SD - 3/4	3/4	5.141	1.50	1.75	0.875	0.6875	4800

\*3/8" Common Centerline / 98.4mm Common Centerline



## CROWFOOT ADAPTER (SRA)

- Gain the significant advantage of our interchangeable head system by attaching the SRA to any fixed square drive wrench.
- Ideal for use when a direct reading torque wrench is required but space is limited.
- Use of an adapter requires calculation of torque output.
- When used with our 1 7/16" / 36.5mm Interchangeable Heads the adapter length will be 3" or 76.2mm.

Part No.	Model	Description
850653	SRA-3/8	3/8 Female-Male Dovetail
850655	SRA-1/2	1/2 Female-Male Dovetail



**WARNING**



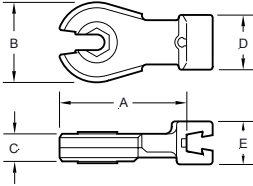
- Do not exceed rated torque
- Do not use to break fasteners loose
- Periodic recalibration is necessary to maintain accuracy
- Read safety precautions on page 59



## RATCHETING FLARE NUT (RFN)

1 $\frac{1}{16}$ " Common Centerline / 36.5 mm Common Centerline  
Single-direction ratchet for use with hydraulic or pneumatic fittings.

Part Number	Model	Size (mm)	A (mm)	B (mm)	C (mm)	D (mm)	E (mm)	Max. Torque (Nm)
819086	RFN-10 mm	10	50.8	7.62	15.24	22.86	17.78	45
819087	RFN-11 mm	11	50.8	7.62	15.24	22.86	17.78	45
819088	RFN-12 mm	12	50.8	7.62	15.24	22.86	17.78	45
819090	RFN-13 mm	13	50.8	7.62	15.24	22.86	17.78	45

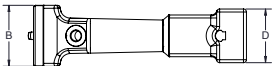


## LTCE-SERIES & LTCE-15 SERIES

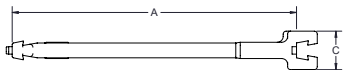
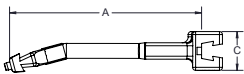
Straight & 15 Degree Angled Extension

Part No.	Model	Angle (degrees)	A (in.)	B (in.)	C (in.)	D (in.)	Max. Torque (in. lbs)
819424	LTCE - 4	0	4	1.125	0.375	1.125	300
819467	LTCE - 6	0	6	1.25	0.375	1.125	800
819487	LTCE - 4 - 15	15	4	1.125	0.375	1.125	300
819504	LTCE - 6 - 15	15	6	1.25	0.375	1.125	800
819021	LTCE - 14	0	14	1.75	0.375	1.50	800

Do not use these with CCM-Series torque wrenches.  
Preset the torque wrench after the extension and fastener engagement head have been attached to the tool.



Angled 15° to Tool Centerline



### WARNING

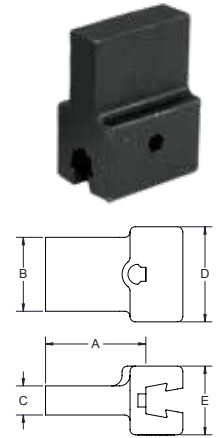


- Do not exceed rated torque
- Do not use to break fasteners loose
- Periodic recalibration is necessary to maintain accuracy
- Read safety precautions on page 59

## STANDARD TOOLING ADAPTERS (STA)

When fabricating special heads to be used with CCM torque handles other than Model CCM 300 and CCM 400, the 1 $\frac{7}{16}$ " / 36.5mm dimension must be maintained between the inside of the attachment block and the centerline of the wrench head. Model CCM 300 and CCM 400 are calibrated to 3 $\frac{7}{8}$ " / 98.4mm common centerline.

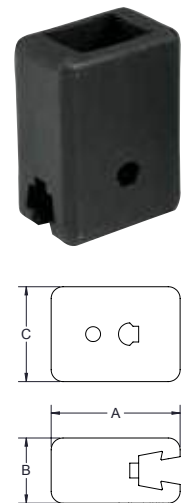
Part No.	Model	A (in.)	B (in.)	C (in.)	D (in.)	E (in.)	Max. Torque (in. lbs.)
819901	STA - 1	0.9375	0.5625	0.25	0.75	0.6875	1600
819902	STA - 2	1.1875	0.875	0.34375	1.125	0.8125	2500
809917	STA - 3	1.50	1.50	0.50	1.50	1	4800



## ADAPTERS FOR DIN STYLE HEADS

- Can be used to convert most DIN style heads to a female dovetail for use on all SR LTC series wrenches. Torque values should be set with the adapter and head attached to the wrench.
- Because of the variation in the length of the DIN plug type heads, it is not recommended that this adapter be used with CCM micrometer adjustable wrenches.

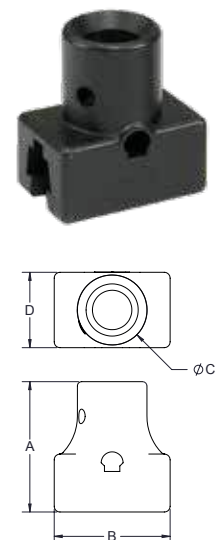
Part No.	Model	A (in.)	B (in.)	C (in.)	Max. Torque (Nm)
819136	Adapter, 9mm x 12mm	1.3594	1.0625	1	282
819137	Adapter, 14mm x 18mm	1.3594	1.25	0.8125	542



## ADAPTERS FOR ROUND STYLE HEADS

- Can be used to convert most round style heads to a female dovetail for use on all SR LTC series wrenches. Torque values should be set with the adapter and head attached to the wrench.
- Because of the variation in the length of the round plug type heads, it is not recommended that this adapter be used with CCM micrometer adjustable wrenches.

Part No.	Model	Description	A (in.)	B (in.)	C (in.)	D (in.)	Max. Torque (in. lbs.)
853021	BAJ	"J" size female-female dovetail	1.40625	1.25	0.75	0.8125	2500
853022	BAY	"Y" size female-female dovetail	1.40625	1.25	0.75	0.8125	2500



### **WARNING**



- Do not exceed rated torque
- Do not use to break fasteners loose
- Periodic recalibration is necessary to maintain accuracy
- Read safety precautions on page 59